

# Crawlbrella Cover Assembly Instructions

Tools Required: Size ½” socket and ratchet.

Parts List:

1.) **Front Lid** 2.) **Rear Lid** 3.) **Right Side** 4.) **Left Side** 5.) **Front** 6.) **2 Vent Covers**  
7.) **10 Carriage Bolts** 8.) **16 Flat Washers** 9.) **16 Lock Washers** 10.) **14 Nuts**  
11.) **2 Wing Nuts** 12.) **Lid Support Bracket**

## Step 1 - **Attaching the front and side pieces together.**

Position both side pieces and the front piece as shown in photo #1.

Assemble the front and left side pieces together. Be sure to place the front piece into the inside of the side piece until holes align (photo #2).

Install a carriage bolt through both pieces and secure with a flat washer, lock washer and nut (photo #3). Be sure to install the front bolt and fully tighten this nut. Then install the side bolt and securely tighten. Do the same procedure for the right side.

## Step 2 – **Attaching the rear lid to the side pieces.**

Place the assembled unit standing up (photo #4) and align the holes in the rear lid with the holes in the side pieces. Install a carriage bolt through both pieces and secure with a flat washer, lock washer and nut (photo #5). 4 total.

Before fully tightening, be sure that the outside edge of the rear lid is aligned with the edge of the side pieces (photo #6).

## Step 3 – **Attaching front lid to rear lid.**

\*Make sure the lock cams are in the unlocked position (photo #7).

Place the front lid on top of the base frame and align the hinge bolts with the hinge holes on the rear lid. Secure with a flat washer, lock washer and nut. \*\*Make sure all six bolts are through the holes before tightening (see photos #8 & #9).

Before fully tightening, make sure the outside edges are in alignment.

Turn the three front latches clockwise to secure the front lid.

If you are not planning to vent the cover, install the metal vent cover plates now.

The metal plate is to be located on the exterior and secured with a carriage bolt, flat washer, lock washer and wing nut (photo #10).

Your Crawlbrella cover assembly is now complete and ready for installation. Make sure all nuts and bolts are tightened securely before installing the cover in its designated place.

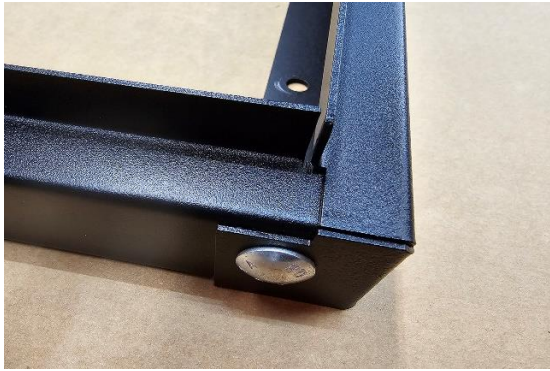
# Crawlbrella Cover Assembly Instructions



#1



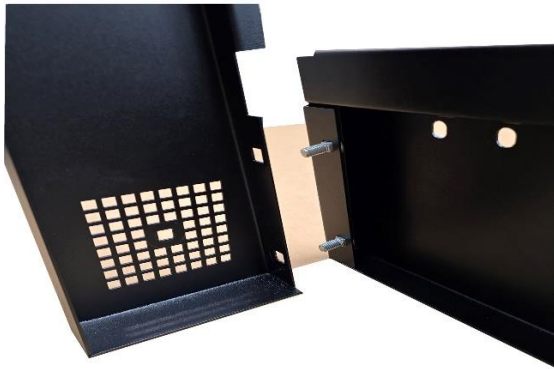
#2



#3



#4



#5



#6



#7

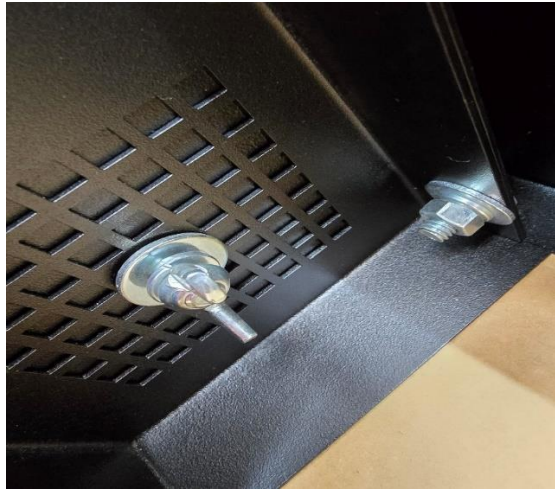


#8

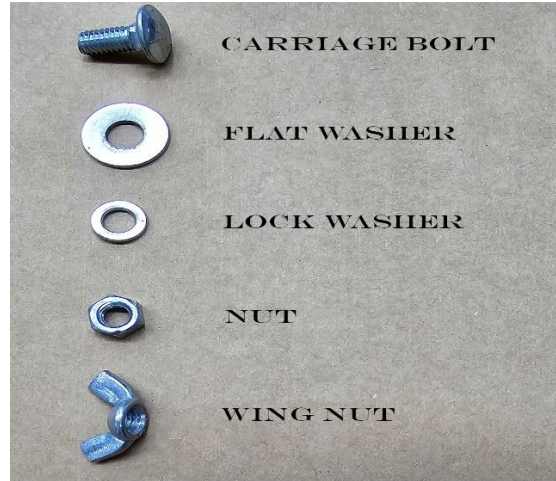
# Crawlbrella Cover Assembly Instructions



#9



#10



# Crawlbrella Cover Assembly Instructions

- #1 - FRONT BAR
- #2- LEFT SIDE
- #3- RIGHT SIDE
- #4- REAR LID
- #5- FRONT LID

LID SUPPORT BAR  
VENT COVER

